



**Selbon**

Residential sales & lettings

Red Cedar Avenue, Fleet,  
Hampshire, GU51 3HB  
Guide price £535,000 Freehold

 3  2  2  B

**01252 979300**  
Selbonproperty.co.uk



- Open Plan Living Kitchen Dining Area
- Landscaped Rear Garden
- Finished to a High Standard
- Kitchen
- Forthcoming School, Village Centre and Shops
- Parking for Three Cars
- Home Office with Power and Heating
- Two Bathrooms
- Sought After Developments
- Well Established Community

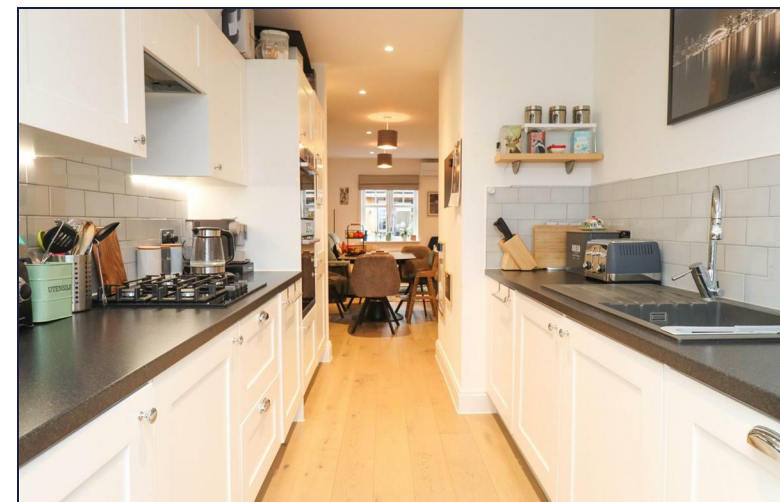
Selbon Estate Agents are delighted to offer to the market this three-bedroom home which is situated on the sought after development of Hartland Village. Built in 2020 by Berkley Homes, this property benefits from three parking spaces with an EV charging point, two bathrooms and an enclosed rear garden with a home office which offers heating, power and internet.

Accommodation comprises of a spacious light and airy entrance hall which gives you access to the living/dining room which offers spacious accommodation, air conditioning and direct access through a set of French doors into the garden area. The beautifully presented kitchen offers a range of units, work surfacing, integrated appliances and additional appliance space. At the front of the kitchen, you have a bay window which offers space for a small table and chairs. The accommodation on the ground floor is finished with a downstairs cloakroom and a generous under stairs storage space.

On the first floor there are three good sized bedrooms with the main bedroom benefiting from en-suite shower facilities with underfloor heating, as well as built in wardrobe space. The accommodation is finished with the family bathroom with bath and shower overhead.

The well-presented rear garden offers a generous low maintenance artificial lawn area and a mixture of flowers throughout. Outside the back of the property is a small patio area which is ideal for al fresco dining. At the bottom of the garden the owners have made a useful and spacious home office which offers heating, power and internet. At the front of the property, you have two parking spaces with a third space allocated across the road.

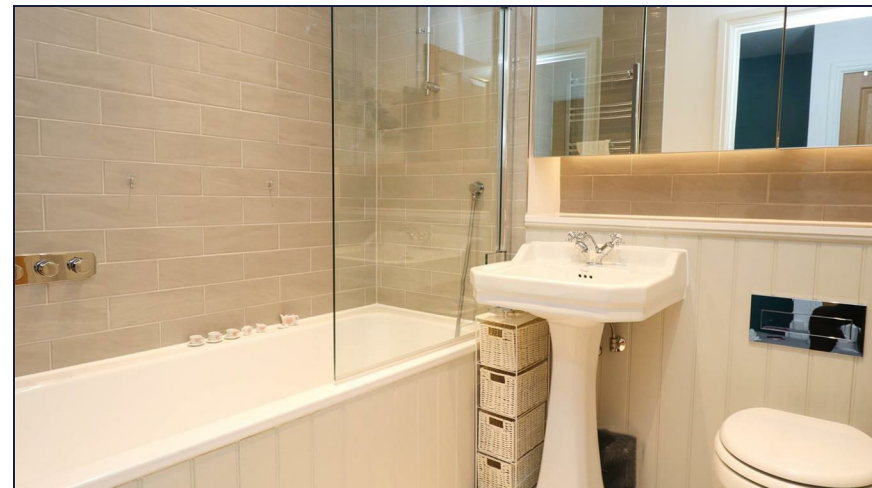
Hartland Village residents benefit from regular community events and activities, including open air cinema, BBQs and Fitness classes. As the village continues to develop there will be amenities built including a primary school, village hall, shops, gym and a café.











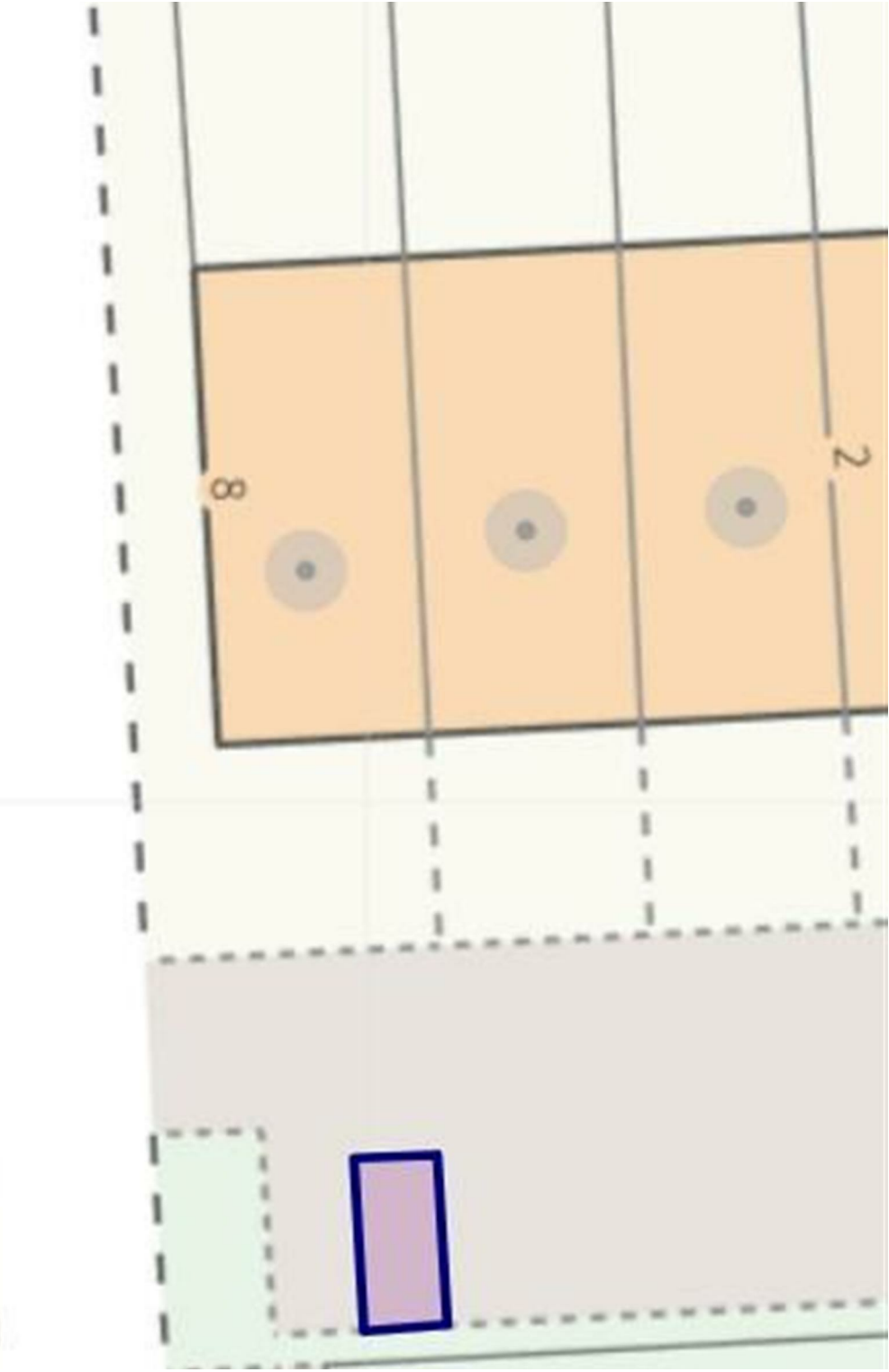
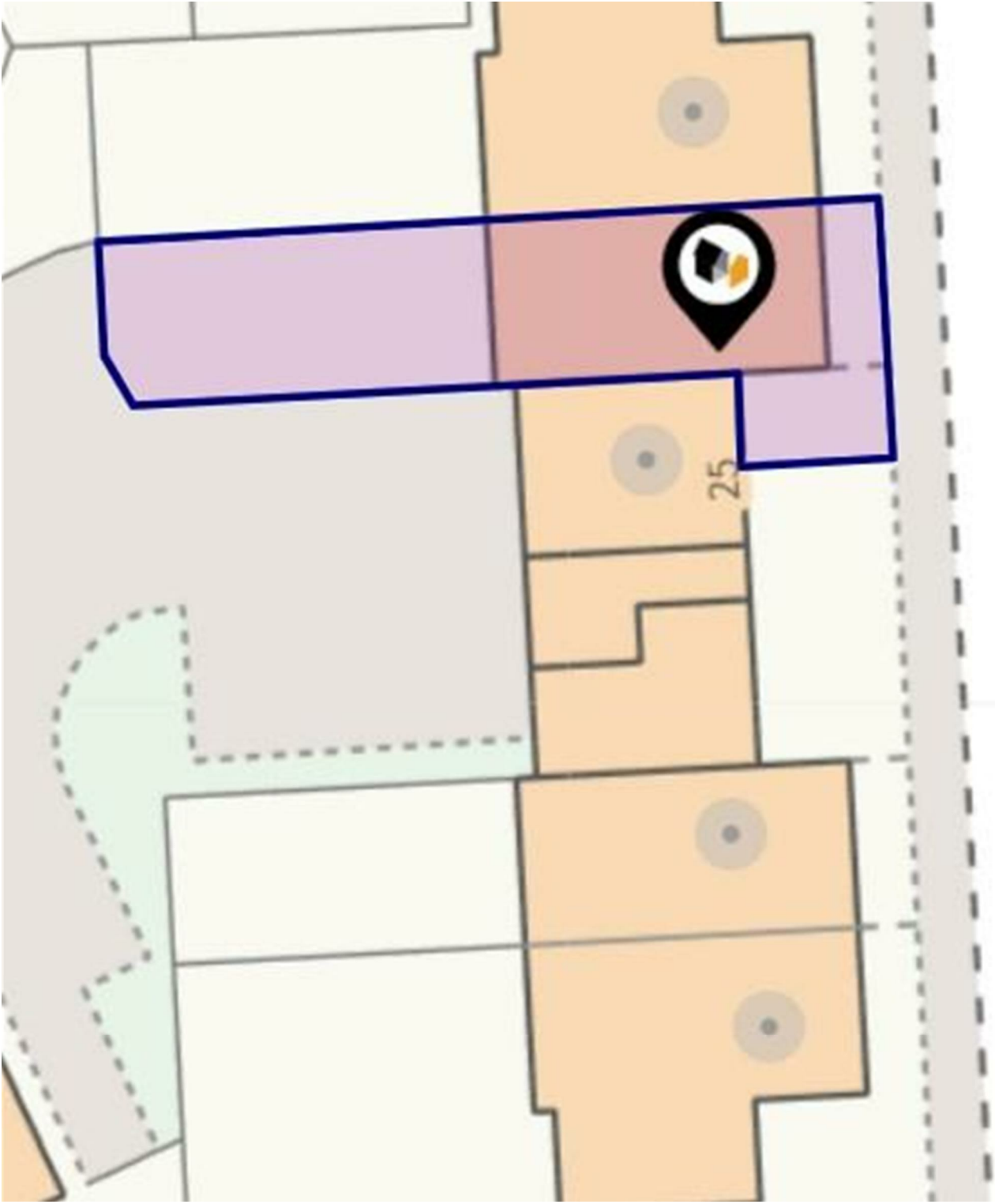




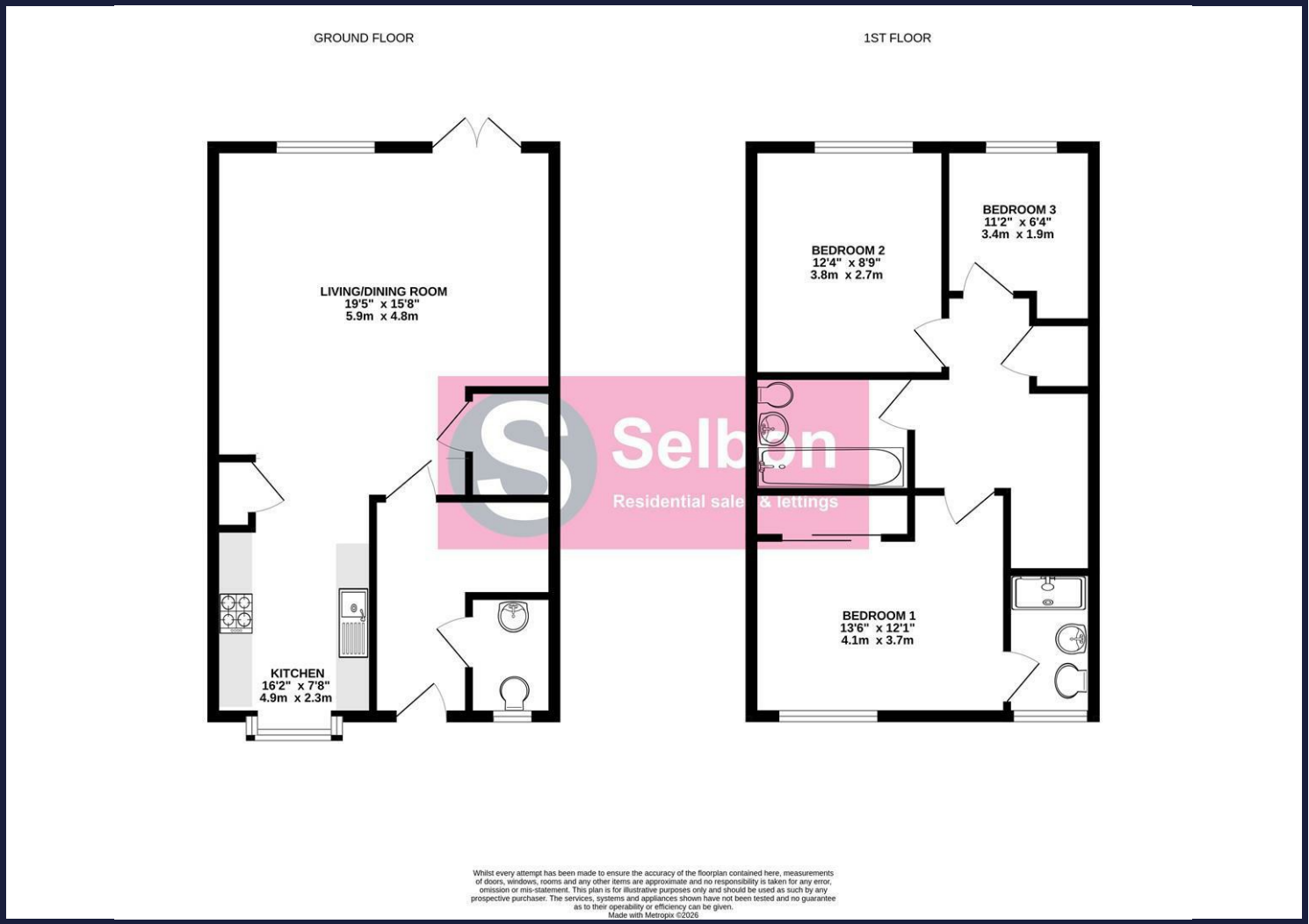








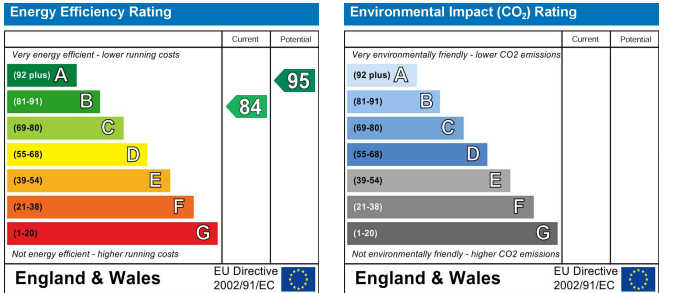
Floor Plans



Area Map



Energy Performance Graph



Viewing

For further information on this property or to arrange a viewing please contact Selbon Estate Agents on 01252 979300

We give notice that these particulars are produced in good faith and in accordance with the Consumer Protection from Unfair Trading Regulations 2008 (CPR). They are set out as a general guide only and do not constitute any part of a contract or warranty whatsoever. Intending purchasers should not rely on them as statements of representation of fact, but must satisfy themselves by inspection or otherwise as to their accuracy. No person in the employment of Selbon has any authority to make or give any representation or warranty whatever in relation to the property. A detailed survey has not been carried out nor have the services, heating systems, appliances or specific fittings been tested. Any photograph incorporated within these particulars shows only certain parts of the property and it must not be assumed that any contents or fixtures and fittings shown in the photographs are either included with the property or indeed remain in it. Room sizes shown and any floor plans should not be relied upon for carpets and furnishings. If there is any point which is of particular importance to you we will be pleased to check the information for you and confirm that the property remains available. This is particularly important if you are contemplating travelling some distance to view the property.

Council Tax Band: D